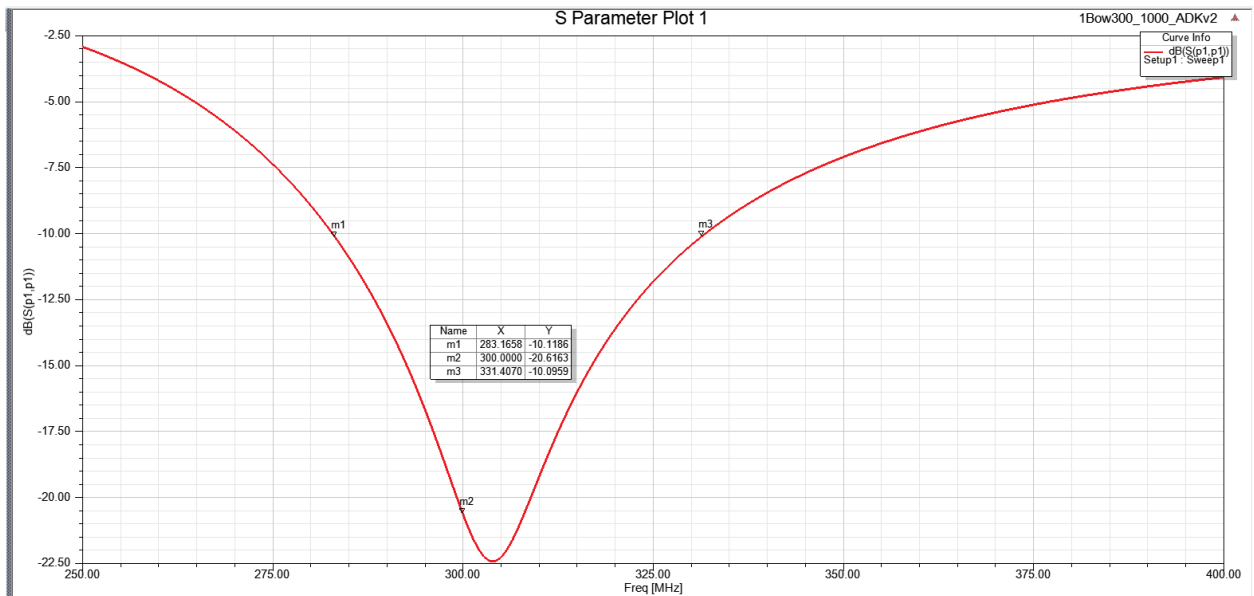
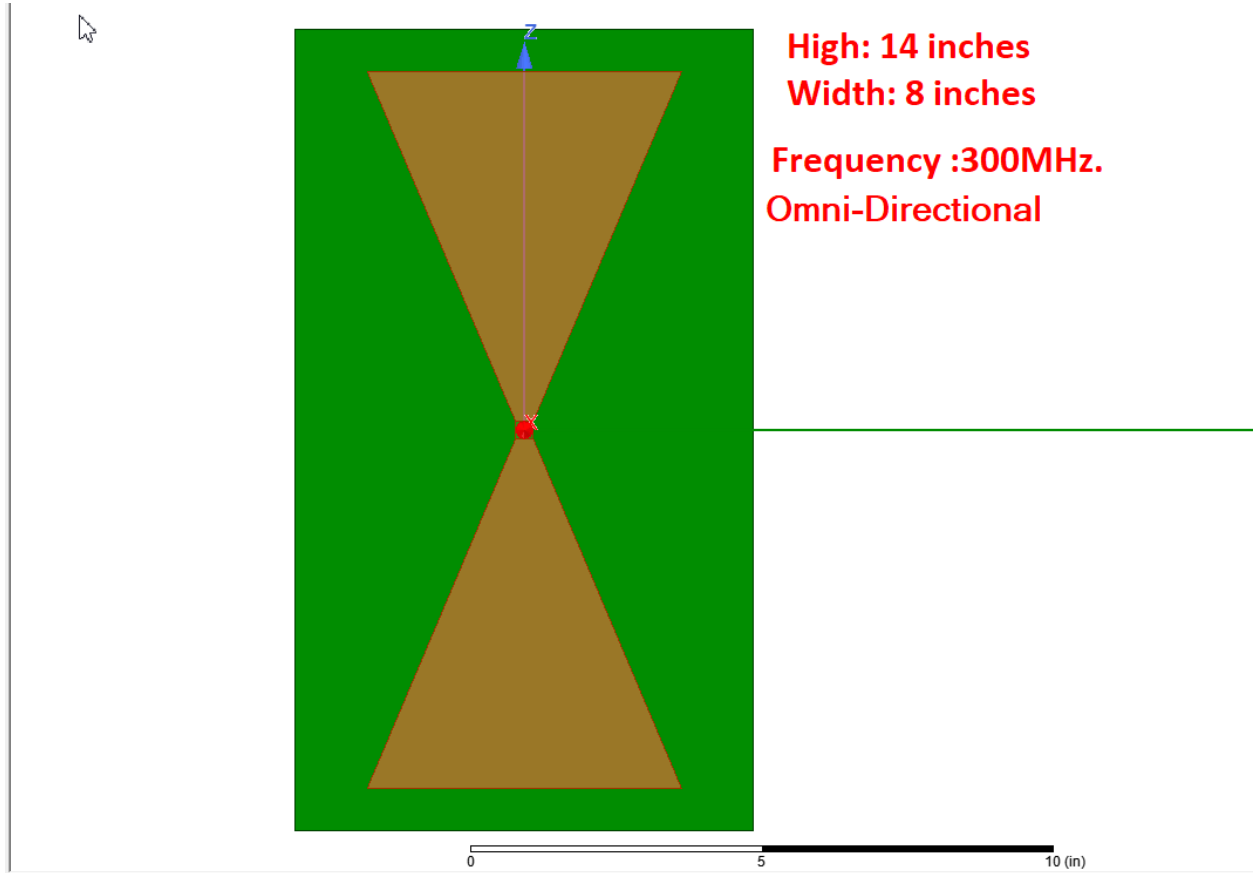
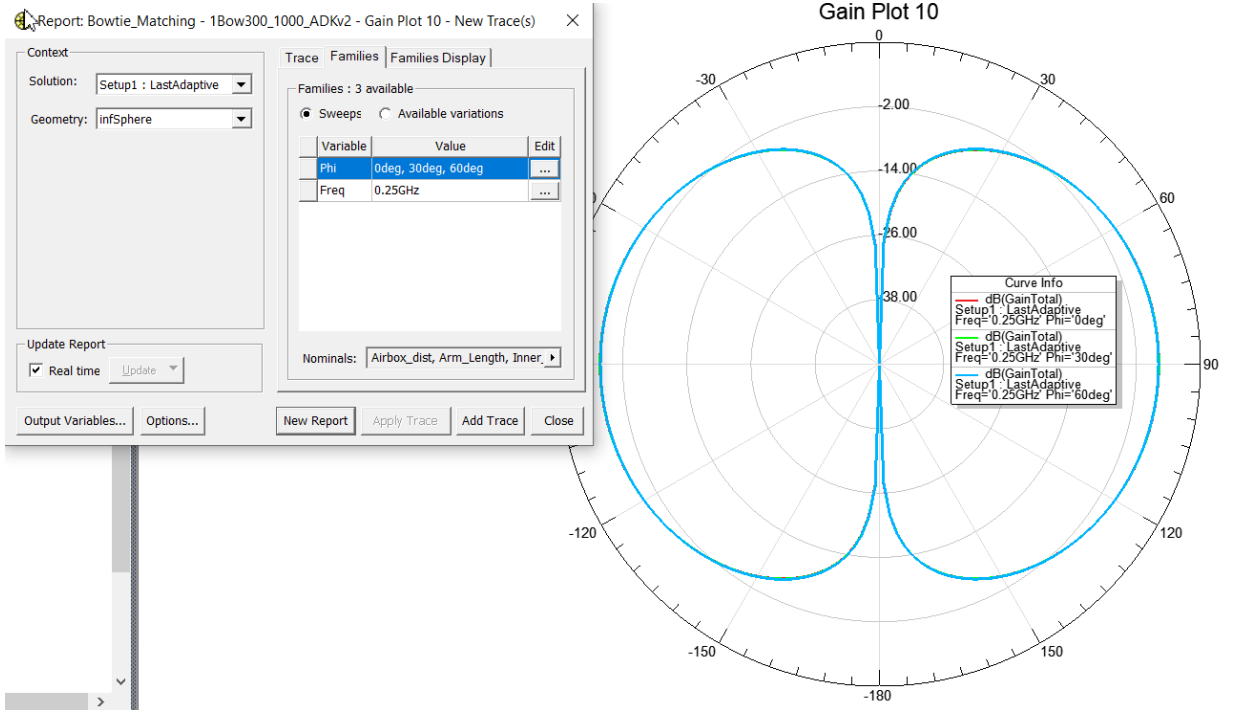
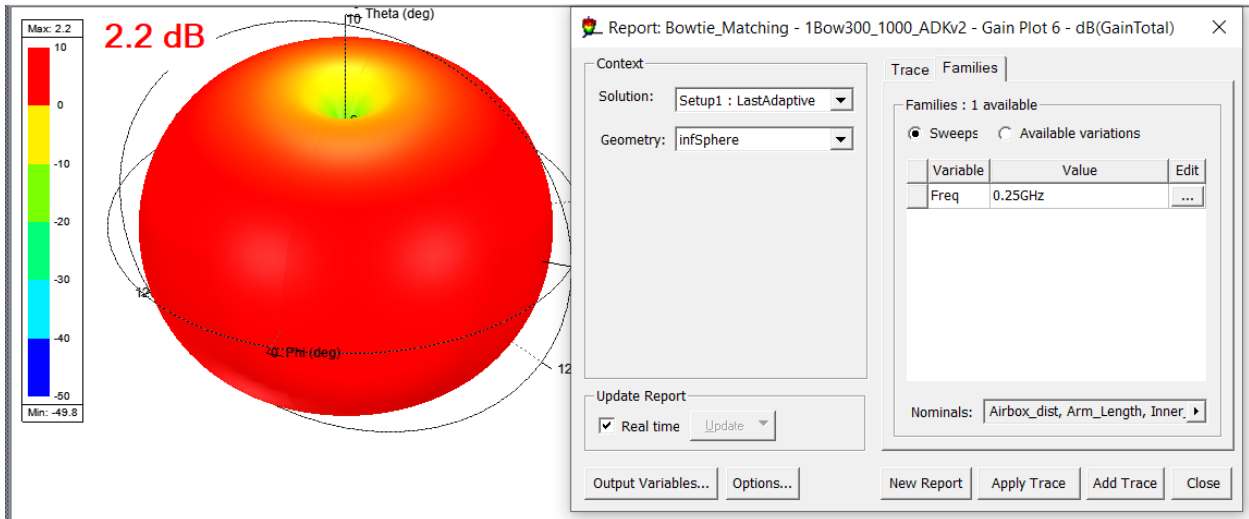
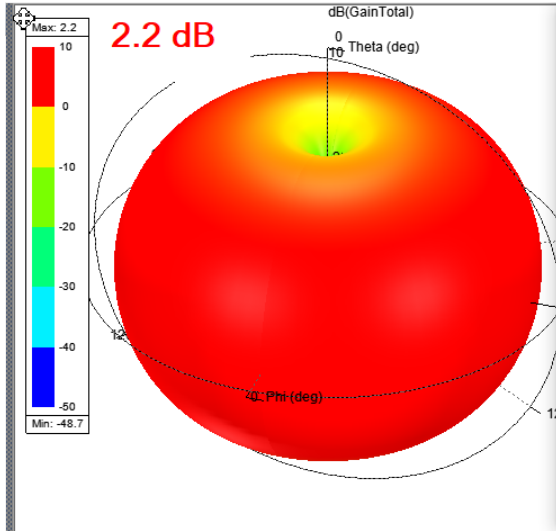


14BO-300-XT-X
Omni-directional UHF Bowtie Antenna
Frequency: 300 MHz







Report: Bowtie_Matching - 1Bow300_1000_ADkV2 - Gain Plot 7 - dB(GainTotal)

Context

Solution: Setup1 : LastAdaptive

Geometry: infSphere

Update Report

Real time

Output Variables... Options...

Trace Families

Families : 1 available

Sweeps Available variations

Variable	Value	Edit
Freq	0.3GHz	...

Nominals: Airbox_dist, Arm_Length, Inner...

Report: Bowtie_Matching - 1Bow300_1000_ADkV2 - Gain Plot 11 - New Trace(s)

Context

Solution: Setup1 : LastAdaptive

Geometry: infSphere

Update Report

Real time

Output Variables... Options...

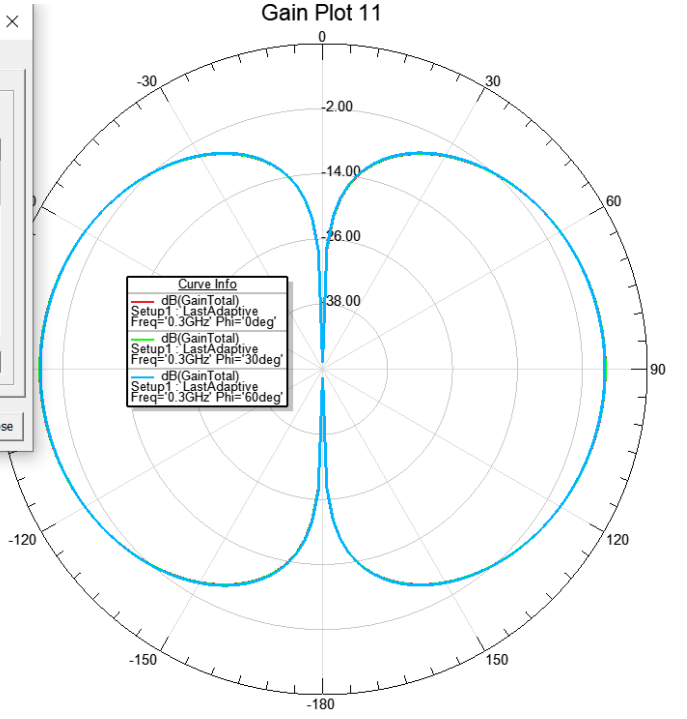
Trace Families Families Display

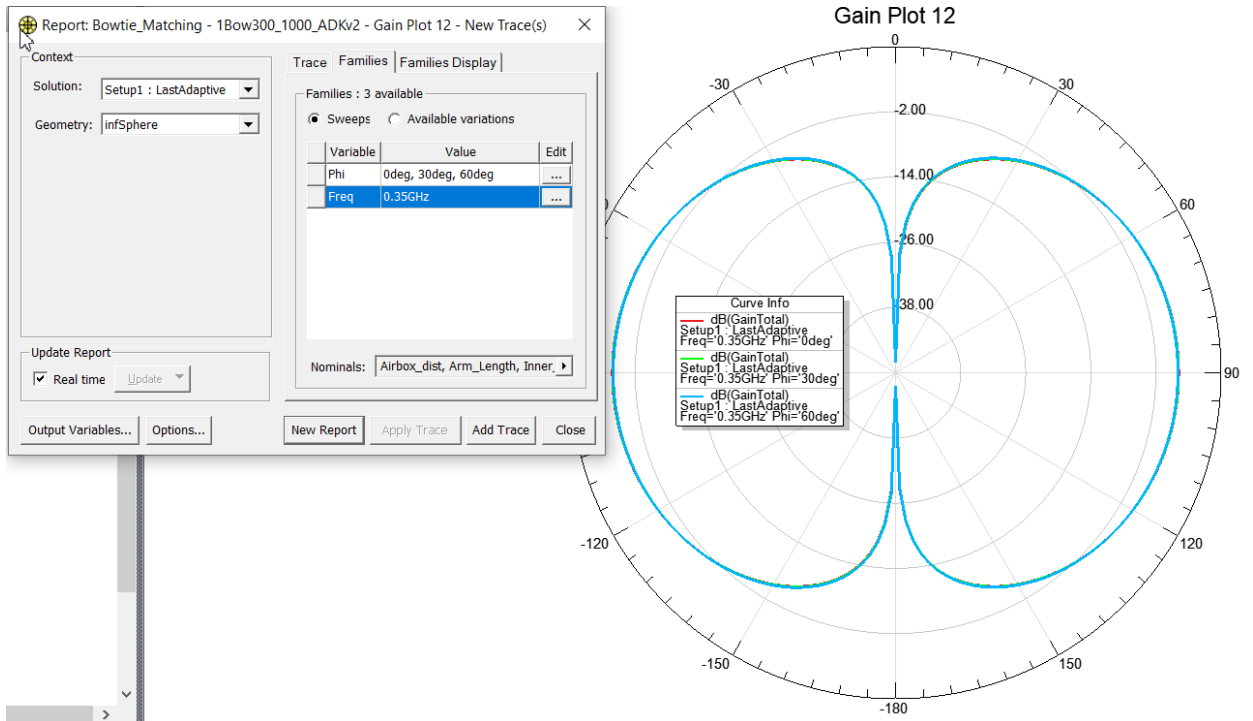
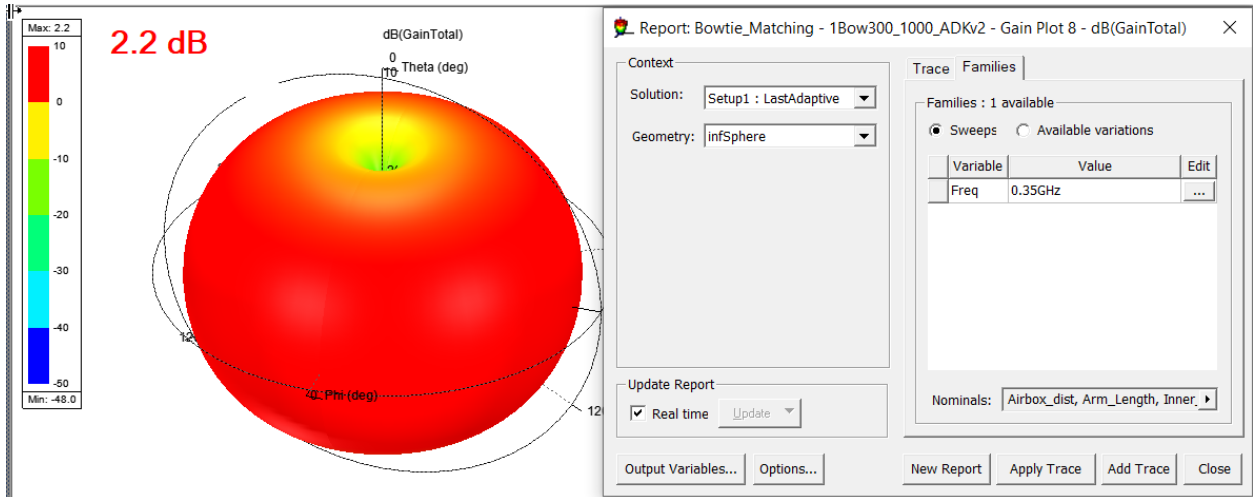
Families : 3 available

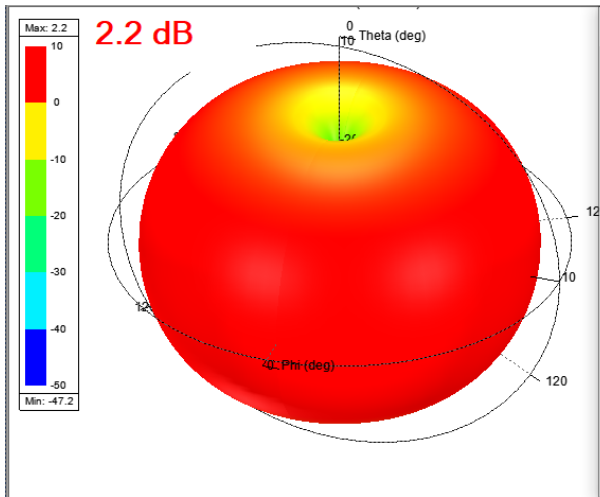
Sweeps Available variations

Variable	Value	Edit
Phi	0deg, 30deg, 60deg	...
Freq	0.3GHz	...

Nominals: Airbox_dist, Arm_Length, Inner...







Report: Bowtie_Matching - 1Bow300_1000_ADkV2 - Gain Plot 9 - dB(GainTotal)

Context
Solution: Setup1 : LastAdaptive
Geometry: infSphere

Trace Families
Families : 1 available
Sweeps Available variations

Variable	Value	Edit
Freq	0.4GHz	...

Nominals: Airbox_dist, Arm_Length, Inner_

Update Report
 Real time Update

Output Variables... Options... New Report Apply Trace Add Trace Close

Report: Bowtie_Matching - 1Bow300_1000_ADkV2 - Gain Plot 13 - New Trace(s)

Context
Solution: Setup1 : LastAdaptive
Geometry: infSphere

Trace Families Families Display
Families : 3 available
Sweeps Available variations

Variable	Value	Edit
Phi	0deg, 30deg, 60deg	...
Freq	0.4GHz	...

Nominals: Airbox_dist, Arm_Length, Inner_

Update Report
 Real time Update

Output Variables... Options... New Report Apply Trace Add Trace Close

